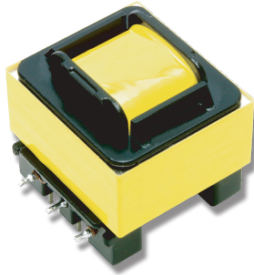


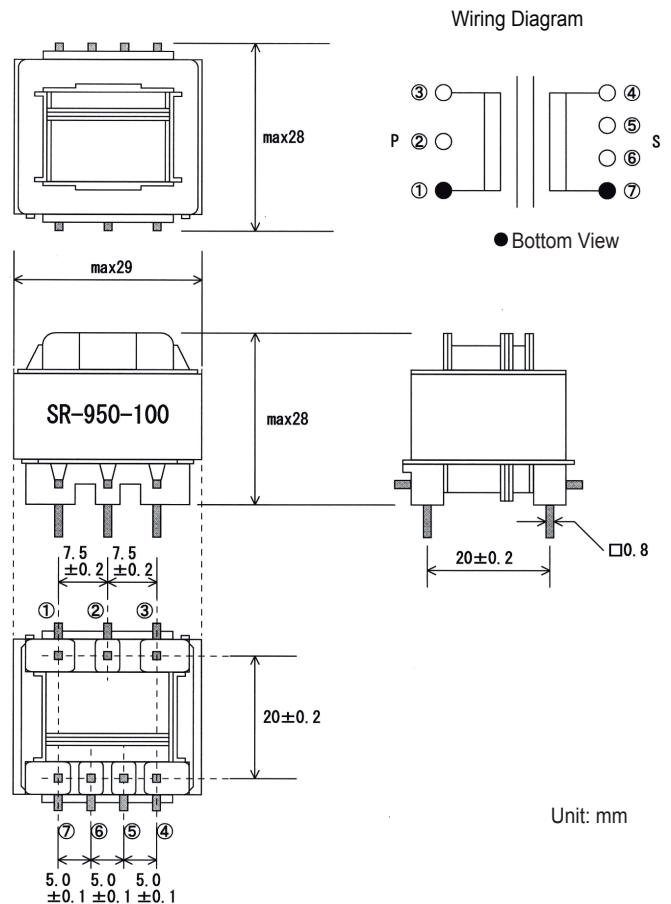
SARAH

PT(Potential Transformer or VT=Voltage Transformer) for PV power conditioner



This product is based on the insulated structure of IEC60950.

- Creepage distance: Over 4 mm
- If the plastic resin material exceeding the tracking resistance 600V is used, performance equivalent to the creepage distance of 8 mm will be guaranteed.
- The linear characteristic is excellent in the domain of the low voltage.
- There is little high frequency distortion.
- Phase difference is small.



Specifications

SL. No.	Items	Specification
1	Rated Primary side Voltage	50Hz / 60Hz, 100V / 200V
2	Operating Voltage Range	50Hz / 60Hz, 50V to 260V
3	Rated Secondary side Voltage	1V / 2V
4	Load Resistance	1kΩ
5	Turns Ratio	100 :1
6	Ratio Error	±1%
7	Phase Angle	1 deg. Maximum atrated
8	Dielectric Withstanding Voltage	AC 2,000V: Primary to Secondary Primary to Core AC 1,000V: Secondary to core No breakdown or flashover atone minute
9	Insulation Resistance	100MΩ (Between)
10	Type of Insulation Level	Type E
11	Temperature Rise	50°C Maximum
12	Operating temperature Range	-10 to +50 °C
13	Compatible Standard	IEC 60950

Rev.1.3

Distributor

TOKOH DENKI CO., LTD.

Home Page: <http://www.tokoh.biz/>

E-Mail: office@tokoh.biz

